

## IR208

- Multi-gas capability
- Extreme accuracy
- Excellent durability
- Tailored to your application



### **ACCURACY AND DURABILITY IN A SINGLE, CUSTOMIZABLE UNIT**

The IR208 Gas Analyzer measures up to 6 different gases using multiple types of gas analysis integrated into one instrument. With a choice of more than 270 gases, the instrument is a highly versatile performer. Up to 3 gases can be measured under infrared and up to 3 additional gases can be measured utilizing electrochemical cell, paramagnetic or other sensors. The wide range of available sensors not only provides versatility in application, but also allows a configuration that is appropriate in accuracy and price for your application.

#### **Features and Benefits:**

- ▶ **High Accuracy:** The IR208 analyzer is calibrated to  $\pm 1\%$  of full scale without drift in calibration for 30 days. Each instrument has a LCD display for easy and accurate readouts. The IR208's dependability, accuracy, and stability increase process control capability resulting in improved product quality and reduced process cost.
- ▶ **Long-Term Stability:** With multi-layered compensation and high-quality IR components, the IR208 provides best-in-class stability, accuracy, and durability.
- ▶ **Quality Composition:** Superior materials including stainless steel sample cells and anti-reflective coatings on detector protective windows and selected o-rings mark the fine details that have gone into the analyzer's construction. Optional materials for corrosive gases and a NEMA 7 enclosure for hazardous environments is available.
- ▶ **Continuous Monitoring:** The IR208 features a long life, solid-state infrared detector designed for high-performance and uninterrupted maintenance-free operation.
- ▶ **Easy Useability:** The IR208 features a large touchscreen graphic LCD display as well as a rotometer and a flow control on the front panel. Adjust the flow for consistently accurate measurements. Simple menu choices guide the user through configuration and measurement modes.
- ▶ **Selection of Outputs:** Choose digital or analog outputs such as 4-20 mA, RS232 or analog DC in the range you specify. Measurement values in ppm or percentage [%] based on gas concentrations in your sample stream.
- ▶ **Usage of Infrared Industries manufactured components:** The use of IRI manufactured optical elements, detectors, and filters guarantees affordability, fast turnaround and consistently high quality. We service gas analyzers of many companies in our offices.
- ▶ **Customization:** For unique applications, we configure the IR208 with specialized sensors, pumps, or filters and even an additional bench. Our state of the art manufacturing facility, located in Hayward, CA is also our design center. Speak to our engineers about modifications to custom match your specification or your application.
- ▶ **InfraView Display and Control Software:** For easy PC control of up to 16 different units from IRI, try InfraView.
- ▶ **Manufacturing Volume and Experience:** Established in 1969, IRI has manufactured more than 60,000 analyzers. Our years of experience and volume result in high-quality instrumentation at competitive prices.

### **COMPANY OVERVIEW**

Infrared Industries of California is a leading developer and producer of state-of-the-art gas analyzers since 1969.

The company is widely recognized for servicing the automotive, environmental, industrial, and petroleum industries with rugged, reliable, accurate, yet affordable analyzers.

Our experience in analytical gas analyzer equipment has expanded through the growth of the industry. Let us help you with your project!



# IR208

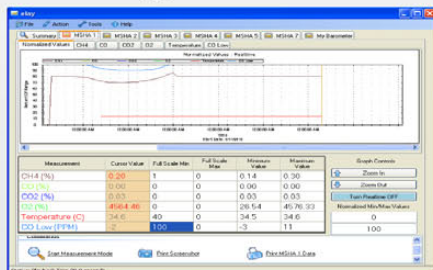
GAS ANALYZER

## APPLICATIONS

- ▶ Combustion Analysis
- ▶ Combustion Efficiency
- ▶ Burners and Boilers
- ▶ Commercial Ovens
- ▶ Controlled Atmospheres
- ▶ Greenhouse Gas Monitoring
- ▶ Auto Emissions Testing
- ▶ Landfill BTU Calculations
- ▶ Stack Gas Monitoring
- ▶ Hazardous Gas Detection
- ▶ Safety Monitoring
- ▶ Hydrocarbon Monitoring
- ▶ Regulatory Compliance
- ▶ Motorcycle Tuning
- ▶ Flue Gas Testing
- ▶ Fermentation
- ▶ LEL Monitoring — Fuel Tanks and Gas Lines
- ▶ Process Monitoring
- ▶ Heat Treatment
- ▶ Flue Gas Measurement
- ▶ Stove Emissions

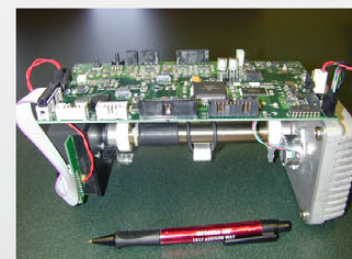
### Infraview Control and Display Software

Infraview is a Windows-based program that allows remote control and display for up to 16 different IRI Analyzers. In addition to displaying current and logged results as raw data, the program offers full-featured graphical abilities.



### IR Measurement Principles

A multiple channel infrared detector array utilizing a single beam infrared optical system detects target gases using specially designed narrow-band optical filters. Comparing the infrared absorption of the reactive detectors to the nonreactive detector in the array provides the comparative for measuring the gas concentration in the sample stream.



### IR208 Specifications

<b>Repeatability:</b> +/-1% of full scale	<b>Linearity:</b> +/-0.5% of full scale fitted to theoretical curve	<b>Power Requirements:</b> 100 - 240 VAC, 50/60 Hz; 20 W max	<b>Warm Up:</b> 5 minutes
<b>Zero Drift:</b> +/-1% of full scale per 24 hours	<b>Noise Level:</b> Less than 1% of full scale	<b>Outputs:</b> Standard: 6.5" LCD; RS232, analog 1-5 V	<b>Physical:</b> Weight 12 lbs. (5.5 kg)
<b>Span Drift:</b> +/-1% of full scale per 24 hours	<b>Temperature Range:</b> 0-50 °C [32° - 122 °F]	Optional: Bluetooth, 4-20 mA high current, alarm relays, USB.*	<b>Dimensions:</b> Approx 7" h x 17" w x 12" d (18 x 43 x 30 cm)
	<b>Ambient Humidity:</b> Up to 95% non-condensing relative humidity	* Adapter required.	<b>Rack Mount:</b> Hardware included (19", 4U)

Specifications are based on all ambient parameters held near constant.