

# MTS 3100 Mastertech

## Quick Start Guide



**BOSCH**

### Before You Begin

All new MTS3100 Mastertech and update kits come with Program Cards that are blank. You will need the following items to activate and program them:

- ▶ PC with Windows 2000 or Windows XP operating system and serial port
- ▶ Internet Connection
- ▶ E-mail account
- ▶ Internet Explorer 6.0 or higher
- ▶ MTS3100 with PC interface cable
- ▶ 16 digit software authorization number (s)

1. Log on to the Bosch licensing website (VLMS) at <http://activation.boschdiagnostics.net>
2. You should have received via e-mail a temporary userID and password to access the system at the time of purchase. If you cannot locate them, contact Customer Support at 800-321-4889, x 4.

If you are an existing Bosch Diagnostics customer, use your current user name and password. Skip Step 3 and proceed to Step 4.

3. At the VLMS log on page, enter your temporary ID and password you received via e-mail.

The first time you log in, you will be required to change both your Username and Password. Enter

your old Username in the **“Existing user ID”** field, then enter your new Username in the **“New user ID”** and **“Confirm new user ID”** fields.

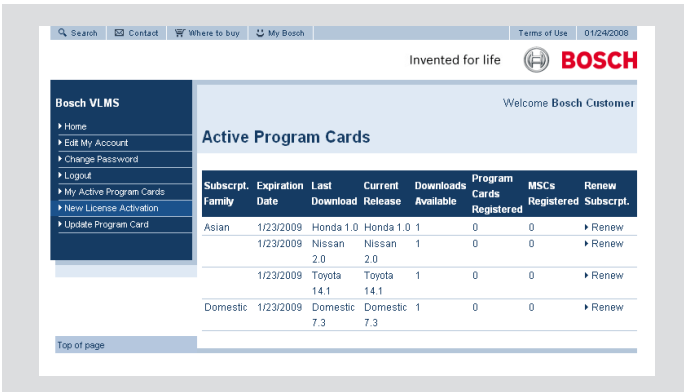
Enter your old password in the **“Existing password”** field, then enter your new password in the **“New password”** and **“Confirm password”** fields. When complete, select **Change Credentials**.

You will receive a confirmation e-mail with your changes.

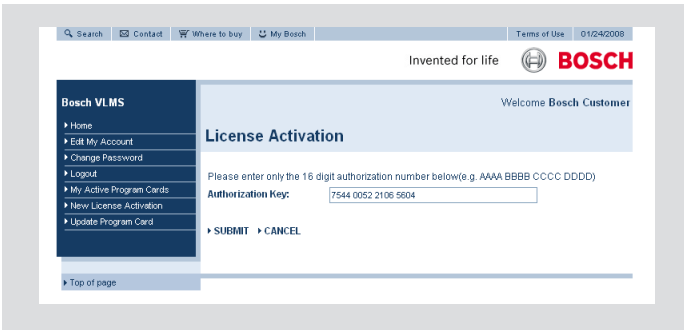
4. Log in to VLMS using your new credentials.

5. Once logged in to VLMS, you will see the **“My Active Program Cards”** screen. Information includes purchased subscriptions, available subscriptions and current downloads.

To activate a new MTS3100 Mastertech license, select **"New License Activation"** on the left navigation bar.



- Copy and paste or enter the 16-digit authorization key you received via e-mail for the software you wish to activate. When ready to proceed, select **"Submit"**.

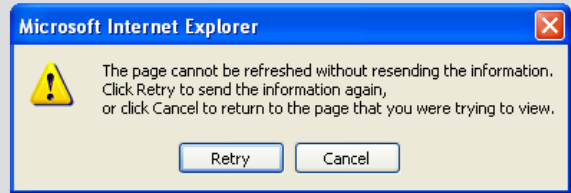
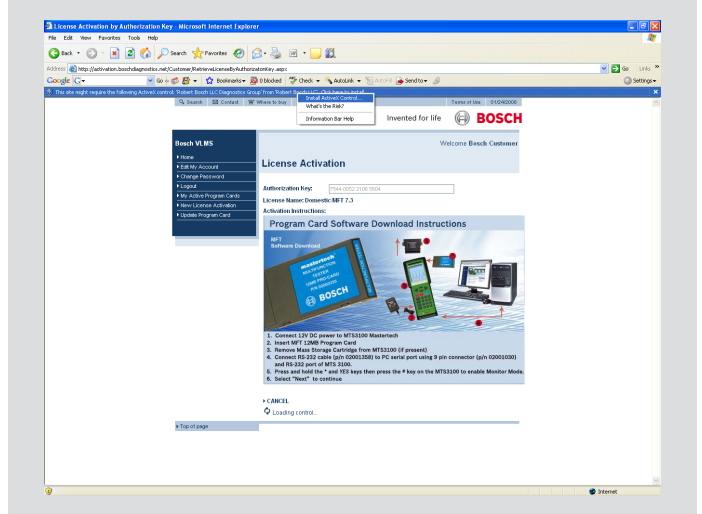


- You will be prompted to install an ActiveX control from Robert Bosch LLC below your tool bar. Highlight and left mouse click on the bar, and select **Install ActiveX Control** from the dropdown.

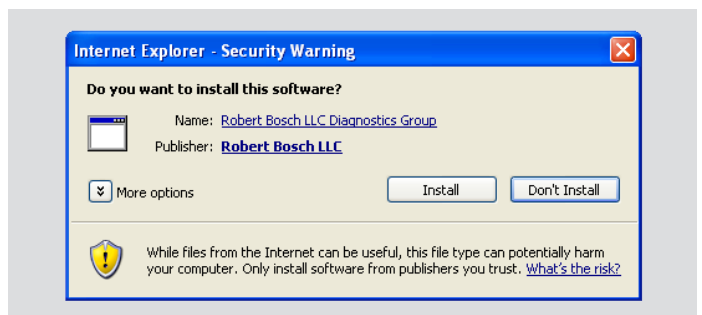


**Note**

VLMS will attempt to load an ActiveX control to Internet Explorer. If your browser settings prohibit ActiveX downloads you must add the website to your Trusted Sites. Refer to the Browser Security section on page 3 for detailed instructions.



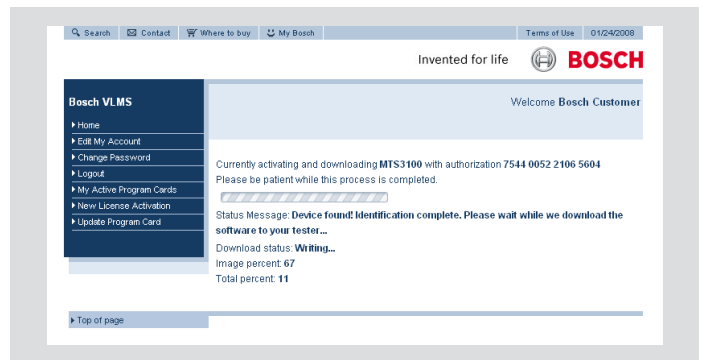
- You will be prompted to refresh the current page. Select **"Retry"** to continue.



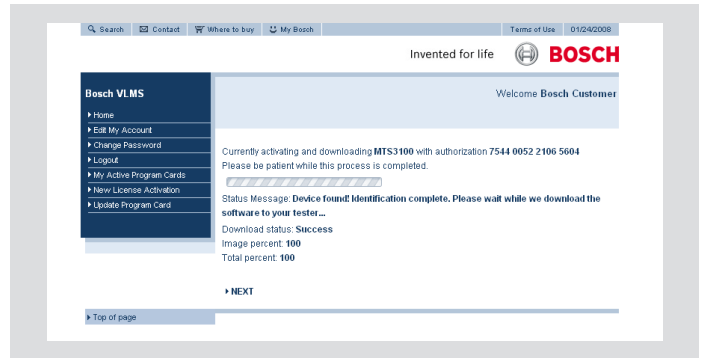
- You will receive a dialog box to acknowledge installation of the VLMS ActiveX control. Select **"Install"** to continue.
- Verify you are activating the correct license name. Follow the on-screen instructions to set the tester in Monitor Mode. Select **"Next"** to begin the download process.



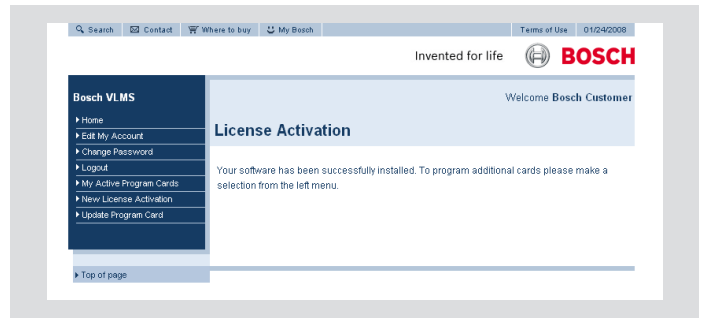
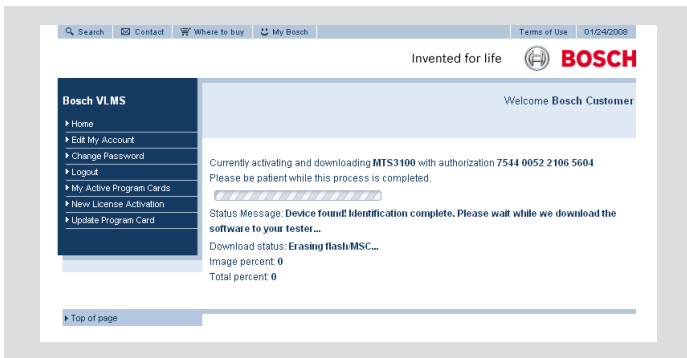
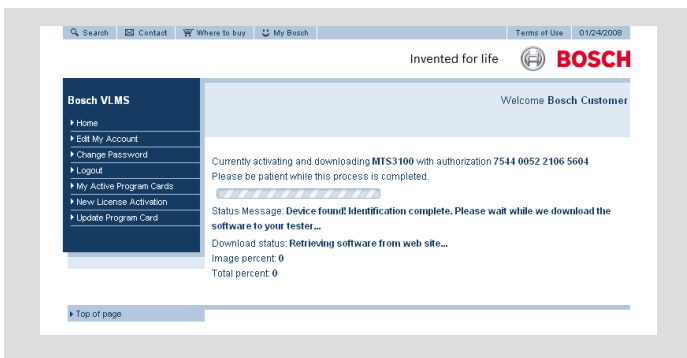
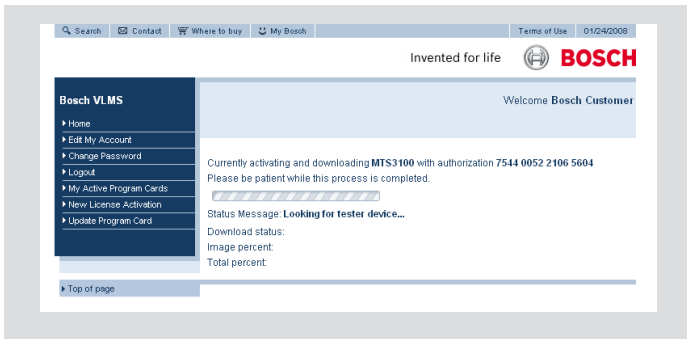
11. VLMS will communicate with the MTS3100, erase the program card and automatically download the correct application to the card.



12. When the download is complete, select "Next" to complete the registration.

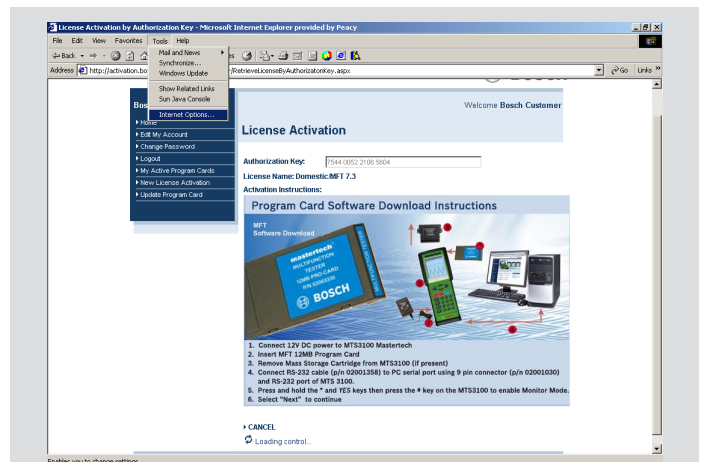


13. Use the "Logout" selection on the left menu bar of VLMS to exit.

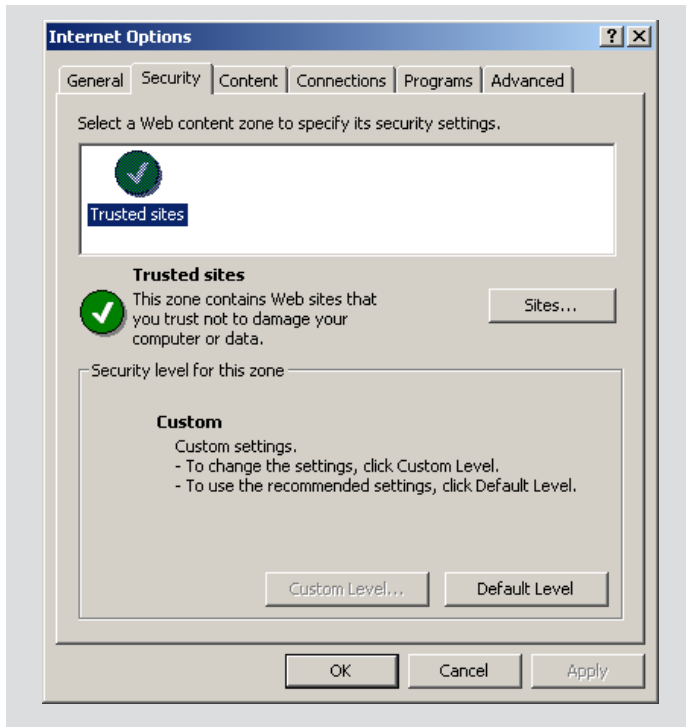


### Browser Security

If your security settings do not allow the ActiveX install procedure, follow these steps to add VLMS to your Trusted Sites.

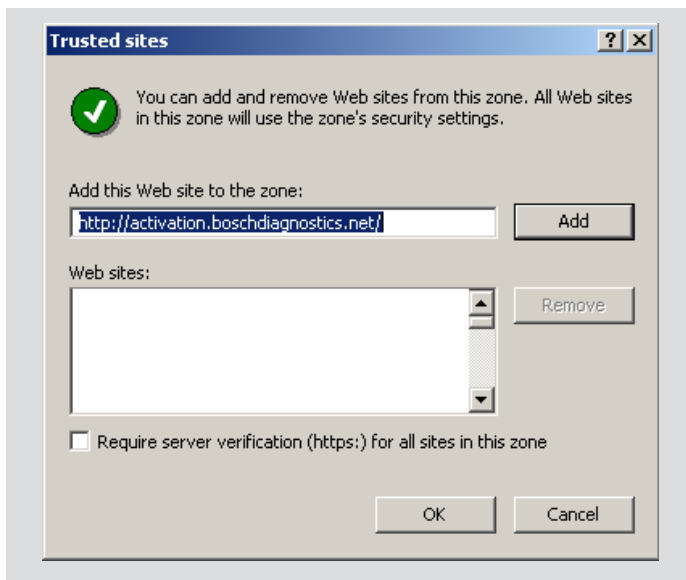


1. On the “**Tools**” dropdown of Internet Explorer, select “**Internet Options...**”
2. Select the “**Security**” tab and the “**Sites**” button.



4. Select “**OK**” to close the dialog box and hit the “**F5**” key to refresh the web page.
5. Resume the activation process according to the Licensing Process beginning on page 2.

3. In the window below “Add this Web site to the zone” type in the following web address:  
***http://activation.boschdiagnostics.net/***



Select the “**Add**” button to complete the entry.

**Robert Bosch LLC**  
 Automotive Aftermarket Division  
 Diagnostics Business Unit  
 2040 Alameda Padre Serra, Ste 220  
 Santa Barbara, CA 93103  
 Phone 800-321-4889  
 ©2008 All rights reserved.